



See data differently.

What is DataFreedom?

It's self service reporting for your Real Estate data

Getting your data out of your real estate software can be expensive, and time-consuming.

Our platform allows you to get your data out of Yardi and other systems quickly and easily, without forcing you to spend resources on a costly data warehouse implementation.



How do we Free Your Data?

It's a 4 step process



1. Upload it to the **Cloud**

Using Yardi's Disaster recover backups, we upload the entirety of your Yardi data to a **SQL Server database hosted in Azure**. Getting started is as easy as submitting your Yardi SFTP credentials to our secure DataFreedom portal.

How frequently does it refresh?

We have 3 Options



Once a Day
Using Yardi's Disaster Recovery Backups



Every 30-90 min
Using Transactional Log Shipping



Every 5 min
Available to Yardi Private Cloud Clients





2. We make it **Easy to Understand**

Our **self-service reporting layer** transforms the complex Voyager Schema, which typically contains 10k+ tables, into an easily digestible list of around 100 views that any analyst on your team can understand.

For Example, in the Voyager schema there is a table called **property** with columns that are tricky to understand.

Column	Value
hmy	123
scode	prop1
saddr1	Property 123
saddr2	123 State Street



DataFreedom takes those columns and renames them to something your team can understand in our **Global Property** view.

Column	Value
Property Id	123
Code	prop1
Name	Property 123
Address 1	123 State Street

Taking it a step further, in Yardi to see something as simple as a **"Property Attribute"** requires several complex joins.



DataFreedom does this all for you. We've designed our **Global Property** table to include these values along with a collection of other beneficial columns for reporting.

Column	Value
Property Id	123
Attribute - Region	USA
Attribute - PM	John Smith
Attribute - Fund	Fund II

Our **vast** DataFreedom Reporting layer **covers more Voyager modules than any other product on the market** and links them all together in one complete and easy-to-understand schema.

DataFreedom also enables you to **customize the schema** and create your own views, stored procedures, and tables, however you see fit. We also **keep all of the raw Voyager data available**, so you aren't limited to only our reporting layer.

Global Tenant	
Tenant Id	456
Code	10000456
Name	ACME Corp
Monthly Rent	\$10,000.00

Financial Income Statement	
Property Id	123
Account Tree	ysLis
Post Month	01/01/2023
Book Name	Accrual
Actual	\$1,000.00

* A few columns from a few tables in our vast schema

ABF Journal	
Journal Id	678
Code	prop1
Name	Property 123
Monthly Rent	123 State Street

Construction Job	
Job Id	789
Property Id	123
Code	Property 123
Name	123 State Street

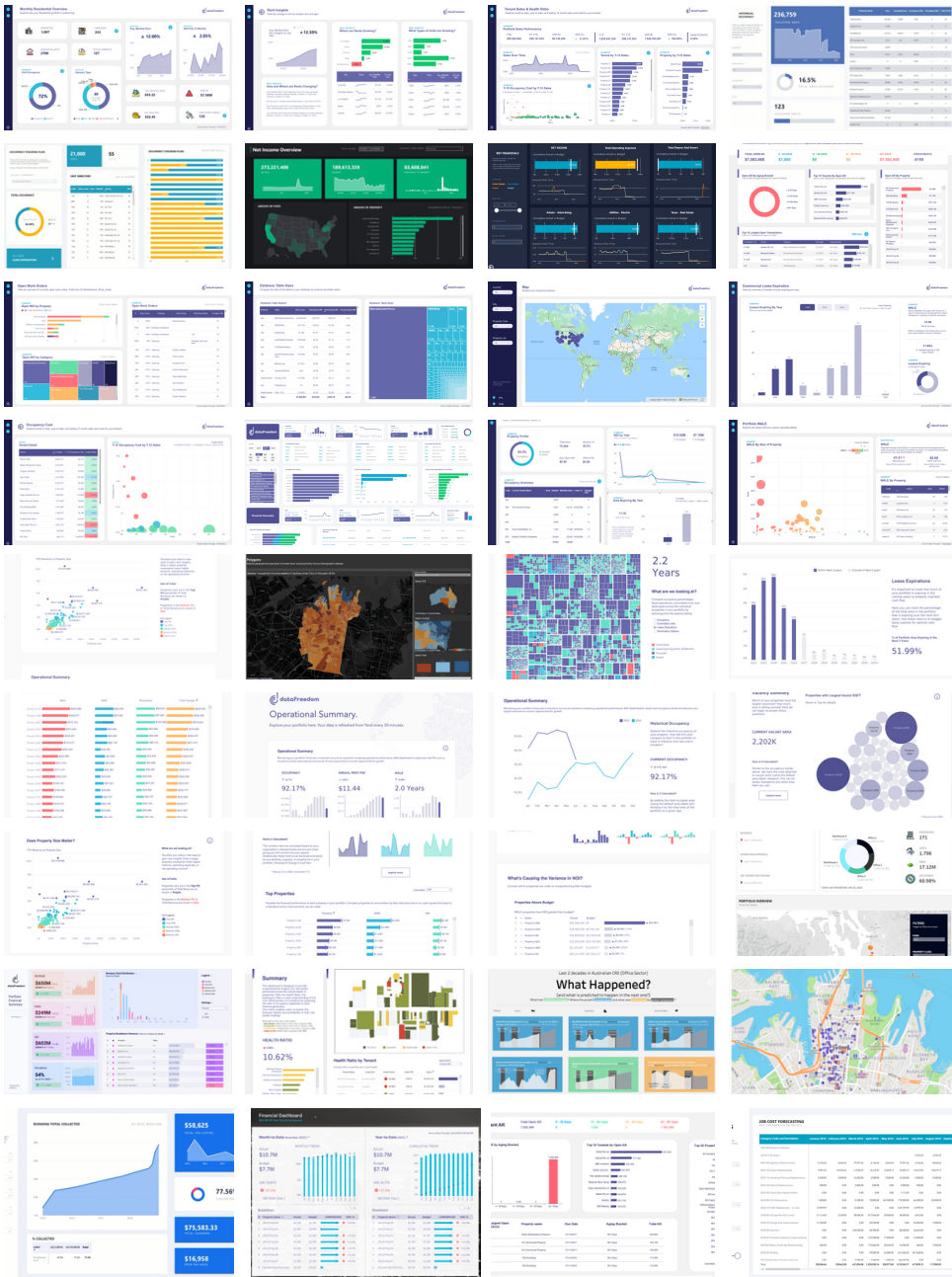
Transaction Charge	
Transaction Id	700001234
Tenant id	456
Control #	C-123456
Amount	\$1,000.00





3. We accelerate your data journey with **Pre-Built Reports and Dashboards**

And, not just one or two dashboards. We have **100+ pre-built templates** that are available to your team, immediately upon sign-up at **no additional cost**.



Each template is completely customizable and can be modified however your team likes



Excel
Downloadable as .xlsx Files



Power BI
Downloadable as .pbix Files



Tableau
Downloadable as .twbx Files





4. We connect your **Other Sources**

Why limit yourself to just Yardi? As DataFreedom is a SQL Server database hosted in Azure, there is no reason to limit ourselves. You can upload any data that you'd like to the DataFreedom server.

In addition to uploading your own data sets, we can also assist you with our many pre-built integrations*. Some of our most popular integrations are listed below:



This looks amazing, what else should I know?



Setup time is only 10 business days

Our schema is dynamic and automatically generates based on your setup, giving you access to your data quickly.



No analysts? No problem, we are here to help

If you don't have an analyst in-house to develop Excel, Power BI, or Tableau reports, we have a team of ready professionals, who'd be happy to develop content with you.*



Pricing is based on volume of data, not # of users

Have 100 users or 10? Regardless, our pricing model is the same; save money by paying for what you need. Contact us for pricing.

*May include additional costs



Imagine a platform that automatically creates a real estate data warehouse for your end-users to instantly consume.

Well, we did so you don't have to.

Contact us for more information.
datafreedom@33floors.com



See data differently.™